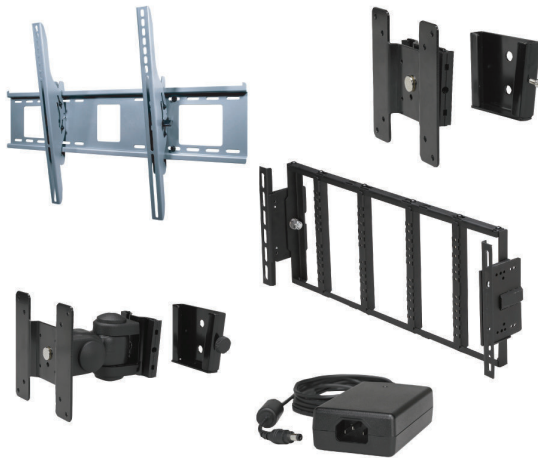




BOSCH
Invented for life

Accessories for LCD Monitors



- Fixed wall mount bracket for LCD monitors
- Swivel and tilt wall mount bracket for LCD monitors
- Easy to install two piece design brackets
- Supports all LCD monitors with a VESA®-compliant pattern
- Mounts support up to 12 kg (26.5 lb) for monitors smaller than 20 inches and up to 90.71 kg (200 lb) for larger monitors
- Universal power supply compatible with up to 19-inch LCD
- Universal rack mount for 15-inch, 17-inch, and 19-inch UML monitors
- Universal power supply provides 12 VDC / 5.0 A output

The Bosch series of Universal Monitor Mounts (UMM) are designed to mount any VESA®-compliant monitor to a wall, up to 12 kg (26.5 lb) in weight. The two types of mounts offered in the series of Universal Monitor Mounts (UMM) are the UMM-LW-20B and the UMM-LW-30B.

The ST660 wall mount is ideal for mounting a 32-inch to a 60-inch LCD screen to a wall. The one-touch tilt feature allows adjustment of $\pm 15^\circ$ without the use of tools.

Each mount comes in two pieces: a VESA®-compliant mounting plate that attaches to the monitor and a V-shaped wall bracket. Once both pieces of the mount are attached, the monitor slides into the V-shaped bracket on the wall, making installation quick and easy. A set screw secures the two sections of the mount together.

The RMK-08 rack mount is ideal for mounting 15-inch, 17-inch, or 19-inch UML LCD monitors. The one-touch tilt feature allows adjustment of $\pm 35^\circ$ without the use of tools.

The Bosch Universal Power Supply (UMP) is compatible with all Bosch LCD monitors up to 19 inches, and provides 12 VDC / 5.0 A output.

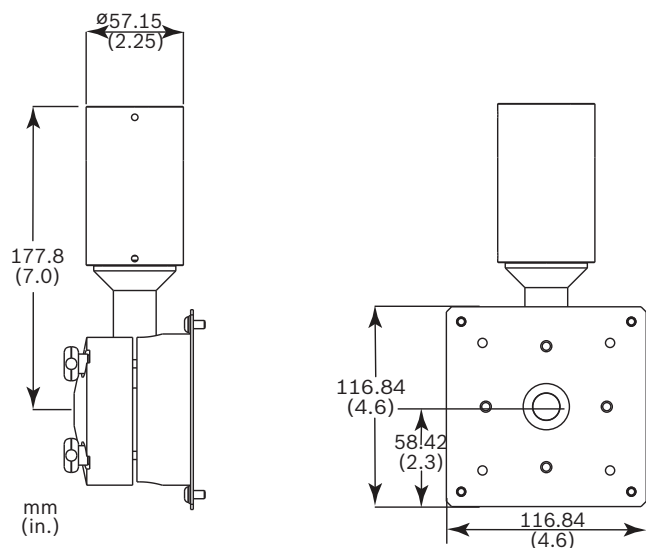
Functions

Model No.	Mount Type	Maximum Weight
UMM-LP-10B	Pipe Mount	11.34 kg (25 lb)
UMM-LW-10B	Flange/Wall Mount	11.34 kg (25 lb)
UMM-LW-20B	Fixed Wall Mount Bracket	12 kg (26.5 lb)
UMM-LW-30B	Swivel/Tilt Wall Mount Bracket	12 kg (26.5 lb)
ST660	Universal Tilt Wall Mount	90.71 kg (200 lb)
RMK-08	Rack Mount Bracket	9.5 kg (20.94 lb)

Technical Specifications

UMM-LP-10B Pipe Mount

The UMM-LP-10B is a ball joint pipe mount with a 10-in. stem and pipe coupling. This mount is designed for use with an LCD flat screen, VESA®-compliant monitor, up to 11.34 kg (25 lb) in weight. This mount allows the monitor to pan 360° and tilt up to 30°.



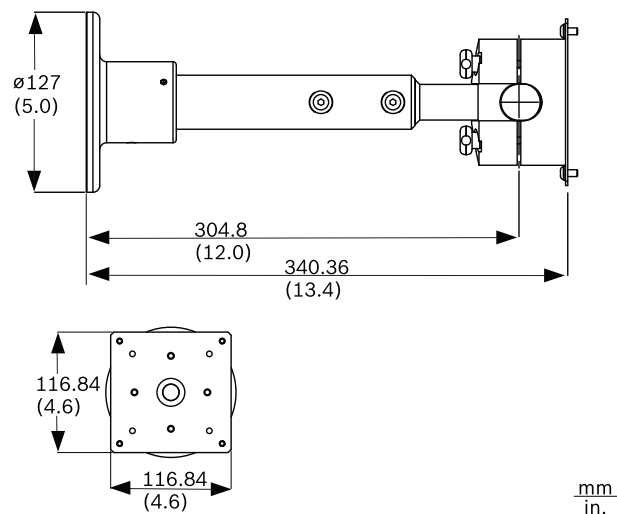
UMM-LP-10B Pipe Mount

Mechanical

Monitor Type	LCD monitors only
Maximum Load	11.34 kg (25 lb)
Pan Range	0° to 360°
Tilt Range	0° to 30°
Material	Aluminum
Finish	Black
Dimensions	See drawing above
Weight	1.2 kg (2.65 lb)

UMM-LW-10B Flange/Wall Mount

The UMM-LW-10B is a ball joint flange/wall mount with a 12-in. stem. This mount is designed for use with an LCD flat screen, VESA®-compliant monitor, up to 11.34 kg (25 lb) in weight. This mount allows the monitor to pan 180° and tilt up to 30°.



UMM-LW-10B Flange/Wall Mount

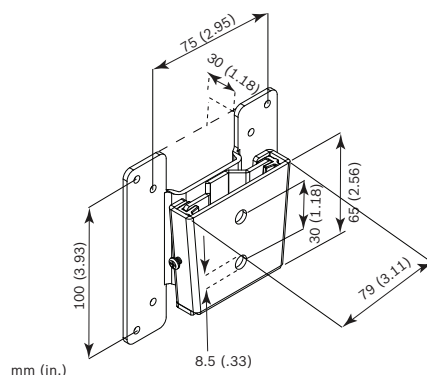
Mechanical

Flange/Wall Mount Bracket (UMM-LW-10B)

Monitor Type	LCD monitors only
Maximum Load	11.34 kg (25 lb)
Pan Range	0° to 180°
Tilt Range	0° to 30°
Material	Aluminum
Finish	Black
Dimensions	See drawing above
Weight	1.6 kg (3.53 lb)

UMM-LW-20B Fixed Wall Mount Bracket

The UMM-LW-20B is a fixed wall mount that is designed for use with any LCD flat-screen, VESA®-compliant monitor, up to 12 kg (26.5 lb) in weight. The mount moves the monitor 1.5 cm (0.59 in.) off of the wall.



UMM-LW-20B Fixed Wall Mount

Mechanical**Fixed Wall Mount Bracket (UMM-LW-20B)**

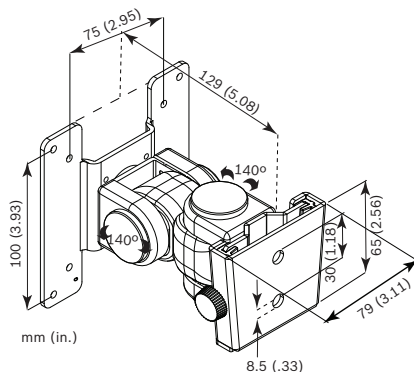
Monitor Type	LCD monitors only
Maximum Weight Capacity	12 kg (26.5 lb)
Swivel Adjustment	360°
Material	Steel
Color	Black
Dimensions	See drawing above
Weight	0.47 kg (1.04 lb)

Parts Included**UMM-LW-20B Fixed Wall Mount Bracket**

1	VESA® mounting plate, fixed
1	Wall bracket
2	1/4 x 2.0 in. Wedge anchors (for concrete installations)
2	1/2 x 2.0 in. Wood screws
4	M4 x 10 mm Screws
1	Level

UMM-LW-30B Swivel/Tilt Wall Mount Bracket

The UMM-LW-30B is a swivel/tilt wall mount that is designed for use with any LCD flat-screen, VESA®-compliant monitor, up to 12 kg (26.5 lb) in weight. This mount allows you to swivel the monitor 360° to position it in either landscape or portrait view. The mount also allows you to swivel and tilt the monitor 140° ($\pm 70^\circ$) for the best viewing angle.

*UMM-LW-30B Swivel/Tilt Mount***Mechanical****Swivel/Tilt Wall Mount Bracket (UMM-LW-30B)**

Monitor Type	LCD monitors only
Maximum Weight Capacity	12 kg (26.5 lb)
Swivel Adjustment	360°
Swivel Range	140° ($\pm 70^\circ$)
Tilt Range	140° ($\pm 70^\circ$)
Material	Steel
Color	Black

Swivel/Tilt Wall Mount Bracket (UMM-LW-30B)

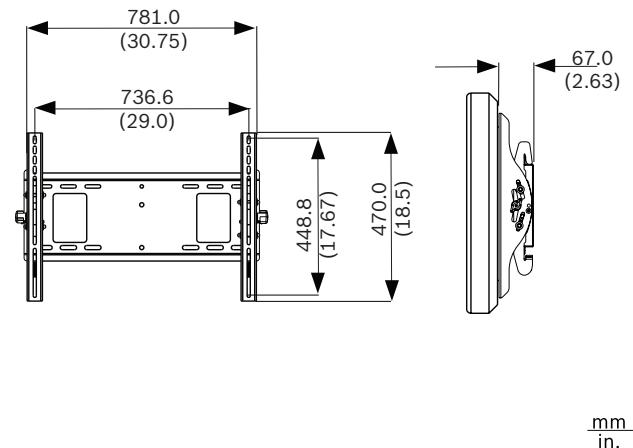
Dimensions	See drawing above
Weight	0.84 kg (1.86 lb)

Parts Included**UMM-LW-30B Swivel/Tilt Wall Mount Bracket**

1	VESA® mounting plate with swivel/tilt arm
1	Wall bracket
2	1/4 x 2.0 in. Wedge anchors (for concrete installations)
2	1/2 x 2.0 in. Wood screws
4	M4 x 10 mm Screws
1	5/16 in. Allen Wrench
1	Level

ST660 Universal Tilt Wall Mount

The ST660 mount includes a universal screen adapter to accommodate mounting holes spaced up to 736.6 mm (29 in.) horizontally and 448 mm (17.67 in.) vertically and up to 90.71 kg (200 lb) in weight. In addition, the universal bracket easily hooks onto the wall plate for fast installation.

*ST660 Universal Tilt Wall Mount***Mechanical****Universal Tilt Wall Mount (ST660)**

Monitor Type	For 32-in. to 60-in. LCD monitors only
Maximum Weight Capacity	90.71 kg (200 lb)
Tilt Range	30° ($\pm 15^\circ$)
Mounting Surfaces	Wood stud, concrete, cinder block, and metal stud ¹
Material	Scratch-resistant fused epoxy
Color	Black
Dimensions	See drawing above
Weight	3.6 kg (8.02 lb)

Metal stud accessory required.

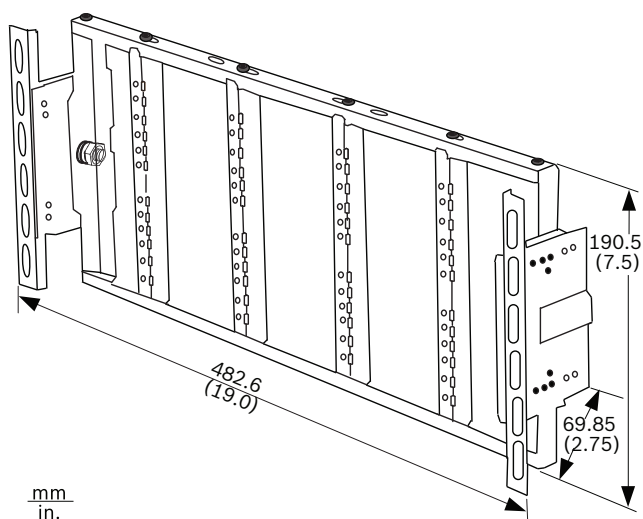
Parts Included

ST660 Universal Tilt Wall Mount

1	Wall plate (double stud)
1	Left tilt bracket
1	Right tilt bracket
4	#14 x 2.5 in. Wood screws
4	Alligator® anchors
1	4 mm Allen Wrench

RMK-08 Rack Mount Bracket

The RMK-08 is a monitor rack mount that is designed for use with a 15-in., 17-in., or 19-in. VESA®-compliant UML LCD monitor in a standard 19-inch (48 cm) equipment rack, up to 9.5 kg (20.94 lb) in weight. The height varies from 7 rack units (15 in.) to 10 rack units (19 in.).



RMK-08 Rack Mount Bracket

Mechanical

Rack Mount Bracket (RMK-08)

Monitor Type	LCD monitors only
Maximum Weight Capacity	9.5 kg (20.94 lb)
Tilt Range	±35°
Material	Steel
Color	Black
Dimensions	See drawing above
Weight	1.4 kg (3.09 lb)

Parts Included

RMK-08 Rack Mount

1	Rack Mount Bracket
2	Rack Guide Bracket
10	M4 x 8 mm Phillips Screw
5	4 x 8 mm Phillips Screw

Ordering Information

UMM-LP-10B Pipe Mount Pipe mount with ball joint, 10-in. stem and pipe coupling, black	UMM-LP10B
UMM-LW-10B Flange/Wall Mount Flange/wall mount with ball joint, 12-in. stem and wall flange, black	UMM-LW10B
UMM-LW-20B Fixed Wall Mount Fixed wall mount for flat panel LCD monitors, black	UMM-LW-20B
UMM-LW-30B Swivel/Tilt Wall Mount Swivel/Tilt wall mount for flat panel LCD monitors, black	UMM-LW-30B
ST660 Universal Tilt Wall Mount Tilt wall mount for an LCD 32 in. to 60 in., black	ST660
RMK-08 Rack kit for mounting a 15-in., 17-in., or 19-in., UML LCD monitor in a standard 19-inch (48 cm) equipment rack, black	RMK-08 Rack Mount

Americas:
Bosch Security Systems, Inc.
130 Perinton Parkway
Fairport, New York, 14450, USA
Phone: +1 800 289 0096
Fax: +1 585 223 9180
security.sales@us.bosch.com
www.boschsecurity.us

Europe, Middle East, Africa:
Bosch Security Systems B.V.
P.O. Box 80002
5600 JB Eindhoven, The Netherlands
Phone: +31 40 2577 284
Fax: +31 40 2577 330
emea.securitysystems@bosch.com
www.boschsecurity.com

Asia-Pacific:
Bosch Security Systems Pte Ltd
38C Jalan Pemimpin
Singapore 577180
Phone: +65 6319 3450
Fax: +65 6319 3499
apr.securitysystems@bosch.com
www.boschsecurity.com

Represented by