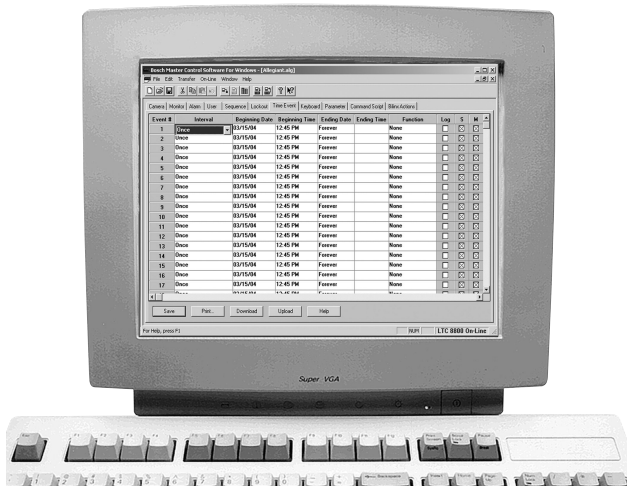


LTC 8059/00 Allegiant Master Control Software

www.boschsecurity.com



BOSCH
Invented for life



- Compatible with all Allegiant Series Systems
- Intuitive spreadsheet table-based design
- Real-time system status monitoring
- Event logging to file

The LTC 8059/00 brings the familiarity of the personal computer to those who supervise closed circuit television systems. Running on a Microsoft® Windows-based compatible computer, this software is the human interface that makes it quick and easy to configure an entire Allegiant system using a standard RS-232 serial interface.

With the Master Control Software (MCS), users can:

- Enter 16 character camera titles
- Enable an option to enter 40-character camera titles ("3-line titles")
- Program advanced camera sequences
- Configure sophisticated alarm response modes
- Set and change an Allegiant's system parameters
- Lock cameras, monitors, remote control devices, and keyboards from certain users
- Select 6-digit camera ID operating mode (2-digit "site" plus 4-digit camera numbers)
- Configure system for Allegiant Satellite operation
- Perform many other system setup and control features

Users can also view system activity with real time monitoring of the system status, and log these events to file.

The MCS is compatible with all current versions of the Allegiant Series Video Switcher/Control systems.

Typically, the MCS communicates with the Allegiant system through a direct RS-232 interface, but it is also possible to install the MCS on a remote PC connected across a Windows based network.

Earlier versions of Allegiant systems may be upgraded to be compatible with the MCS by the installation of current hardware or software upgrades. Contact your Bosch Security Systems, Inc. Sales Representative or Technical Support Representative for details.

Technical Specifications

Minimum System Requirements - PC Platform

Operating Systems	Windows® 98 SE, Windows ME, Windows NT (Service Pack 6a), Windows 2000 (Service Pack 4), Windows 2003 Server, SP2, Windows XP Professional, Windows Vista, or Windows 7 (32/64 bit)
Hardware	Microsoft Windows compatible PC Intel® Pentium® 233 MHz CPU (or greater) 32 MB RAM (with Windows NT or 2000) 128 MB RAM (with Windows XP, Windows Vista or Windows 7) 250 MB fixed drive CD-ROM drive
Ports Required (Minimum)	One (1) USB port (for software security dongle device), One (1) serial port for system communication Additional serial ports required if multiple systems are interfaced.
Display	SVGA (or compatible) display
Pointing Device	Mouse or trackball

Ordering Information

LTC 8059/00 Allegiant Master Control Software

Order number **LTC 8059/00**

Represented by:

Americas:

Bosch Security Systems, Inc.
130 Perinton Parkway
Fairport, New York, 14450, USA
Phone: +1 800 289 0096
Fax: +1 585 223 9180
security.sales@us.bosch.com
www.boschsecurity.us

Europe, Middle East, Africa:

Bosch Security Systems B.V.
P.O. Box 80002
5617 BA Eindhoven, The Netherlands
Phone: + 31 40 2577 284
Fax: +31 40 2577 330
emea.securitysystems@bosch.com
www.boschsecurity.com

Asia-Pacific:

Robert Bosch (SEA) Pte Ltd, Security Systems
11 Bishan Street 21
Singapore 573943
Phone: +65 6571 2808
Fax: +65 6571 2699
apr.securitysystems@bosch.com
www.boschsecurity.asia

China:

Bosch (Shanghai) Security Systems Ltd.
201 Building, No. 333 Fuquan Road
North IBP
Changning District, Shanghai
200335 China
Phone: +86 21 22181111
Fax: +86 21 22182398
www.boschsecurity.com.cn

America Latina:

Robert Bosch Ltda Security Systems Division
Via Anhanguera, Km 98
CEP 13065-900
Campinas, Sao Paulo, Brazil
Phone: +55 19 2103 2860
Fax: +55 19 2103 2862
al.securitysystems@bosch.com
www.boschsecurity.com